

MONTHLY MEMBERSHIP PROGRESS REPORT

District 13 OH1

Results as of: 12/31/2023

GMT:

LOCATION OHIO

GMT CA

Clubs			
RESULTS FOR 2023-2024			
QUARTER	NEW CLUB GOAL	NEW CLUBS	DROPPED CLUBS
JULY/AUG/SEPT	0	0	0
OCT/NOV/DEC	1	0	0
JAN/FEB/MAR	0	0	0
APR/MAY/JUNE	0	0	0

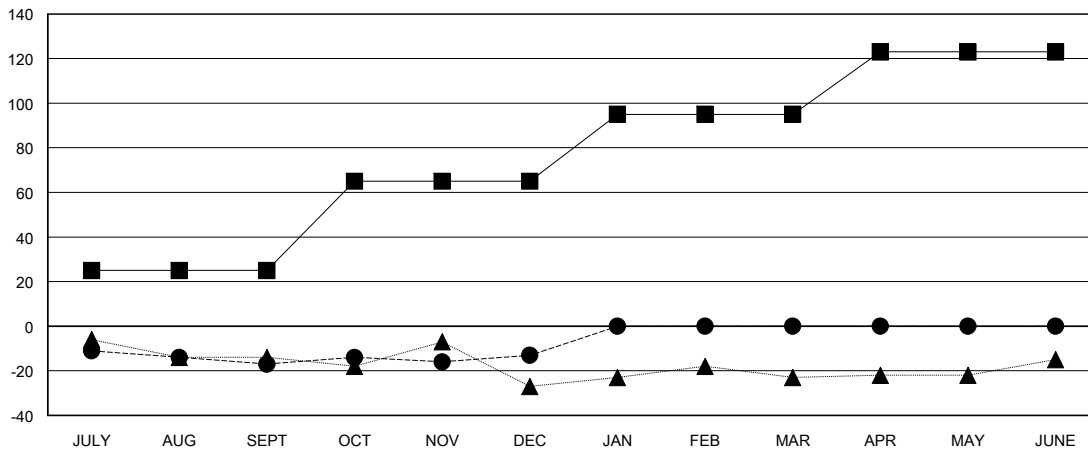
Members			
RESULTS FOR 2023-2024			
QUARTER	MEMBER GROWTH NET GOAL	MEMBER GROWTH ACTUAL	DROPPED MEMBERS ACTUAL (including transfers)
JULY/AUG/SEPT	25	17	32
OCT/NOV/DEC	40	24	19
JAN/FEB/MAR	30	0	0
APR/MAY/JUNE	28	0	0

GOALS AND ACTUAL NEW CLUBS CUMULATIVE



- - CURRENT YEAR GOALS FOR NEW CLUBS
- - CURRENT YEAR ACTUAL NEW CLUBS
- ▲ - LAST YEAR ACTUAL NEW CLUBS

GOALS AND ACTUAL MEMBERS CUMULATIVE



- - MEMBER GROWTH NET GOAL
- - MEMBER GROWTH ACTUAL
- ▲ - LAST YEAR MEMBERSHIP ACTUAL

DROPPED CLUBS: 0	17 CLUBS OF 49 ADDED 1 OR MORE NEW MEMBERS	GENDER DISTRIBUTION
		MALE 1,117 (78.55%)
		FEMALE 305 (21.45%)
DROPPED MEMBERS	CLICK HERE FOR CUMULATIVE MEMBERSHIP DATA	TOTAL FAMILY UNIT MEMBERS 240
DECEASED 16		FAMILY MEMBERS PAYING HALF DUES 123
CLUB CANCELLED 0		
OTHER 35		
TOTAL 51		